

HALF MOON BAY

1235 ACRES, MORE OR LESS

**NOTE**  
 Bearings, distances and coordinates shown on this plat conform with the California Coordinate System, Zone 11. All base stations were positioned either by the U.S. Coast and Geodetic Survey or by highly adjusted second order triangulation of the State Lands Division.  
 Distances computed from a comparison of the coordinates of two points and distances shown upon the plat are grid distances. The corresponding geographic distance is obtained by multiplying the grid distance by 1.000010. All station monuments are designated as such on this plat.

**CERTIFICATION**  
 I, Donald B. Dickson, Reg. Civil Eng. No. 7663, certify that these plat's were compiled under my direction and that all measurements shown on these plat's actually made and their positions are shown correctly.

*D. B. Dickson*  
 Civil Eng., State Lands Division

Approved: *B. March 24/61*

STATE LANDS COMMISSION  
 by *J. H. ...*  
 Executive Officer

**PLAT OF THE GRANT TO THE SAN MATEO COUNTY HARBOR DISTRICT**

CHAPTER 68, STATUTES OF 1960  
 VICINITY OF HALF MOON BAY  
 SAN MATEO COUNTY, CALIFORNIA

SCALE: 1 INCH = 600 FEET  
 SHEET 1 OF 4 SEPTEMBER, 1960

W. S. HATHWELL, CIVIL ENGINE TECHNICIAN R. E. HINES, ASSISTANT CIVIL ENGINEER  
 C. S. ROBERTSON ASSOCIATE CIVIL ENGINEER

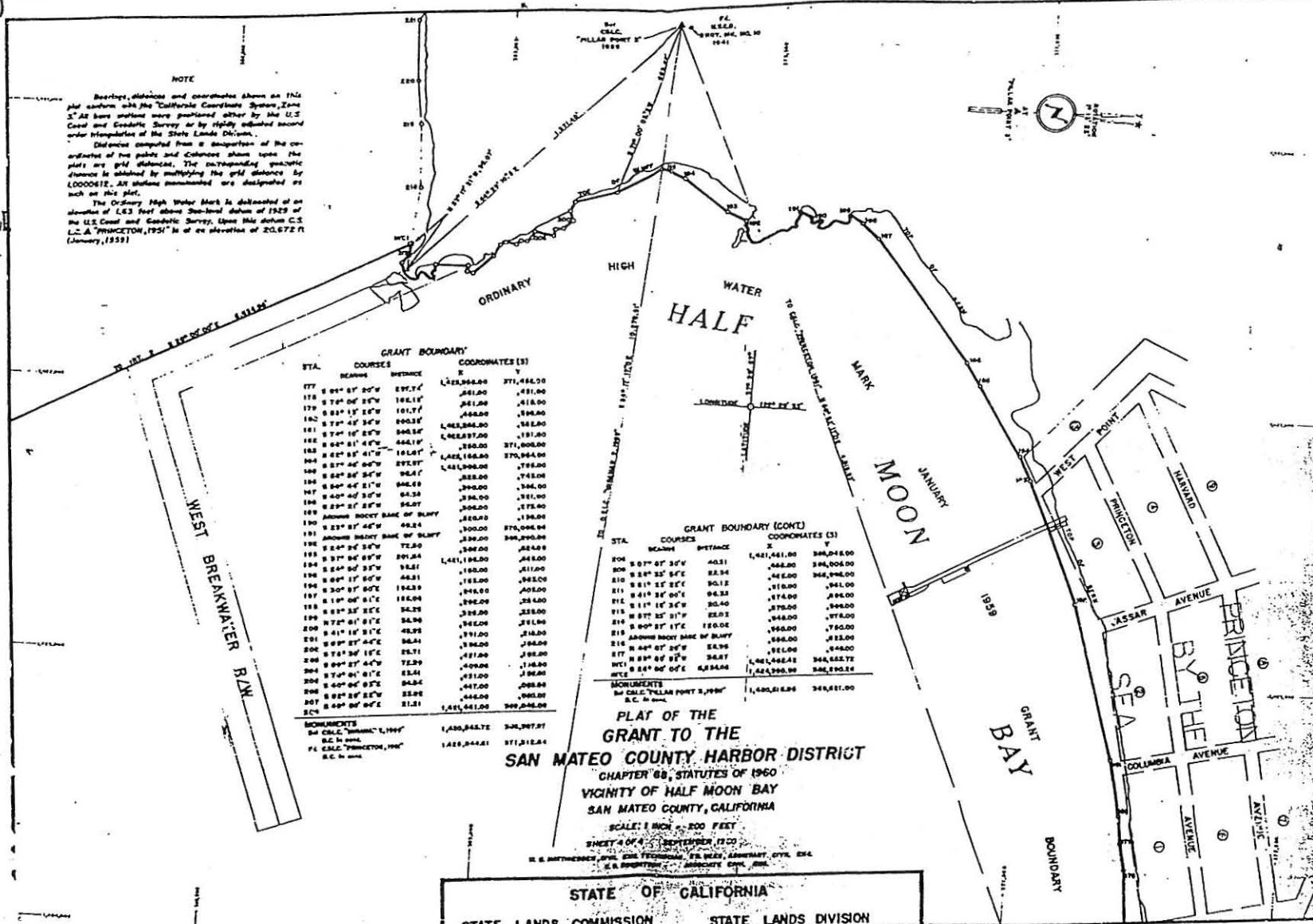
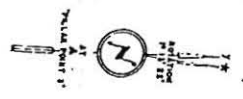
STATE OF CALIFORNIA  
 STATE LANDS COMMISSION STATE LANDS DIVISION

**NOTE**

Bearings, distances and coordinates shown on this plat conform with the California Coordinate System, Zone 5. All base stations were positioned either by the U.S. Coast and Geodetic Survey or by directly adjusted second order triangulation of the State Lands Division.

Distances computed from a comparison of the coordinates of two points and Columns shown upon the plat are grid distances. The corresponding geometric distance is obtained by multiplying the grid distance by 1.000012. All stations monumented are designated as such on this plat.

The Ordinary High Water Mark is delineated at an elevation of 1.63 feet above sea-level datum of 1929 of the U.S. Coast and Geodetic Survey. Upon this datum C.S. L. & A. "PRINCETON, 1957" is at an elevation of 20.672 ft. (January, 1959)



**GRANT BOUNDARY**

STA.	COURSES	BEARINGS	DISTANCE	COORDINATES (S)	X	Y
177	S 04° 07' 20" W	097.74	1,253,962.00	277,484.00		
178	S 73° 06' 28" W	102.15	241.00	481.00		
179	S 03° 15' 28" W	101.77	462.00	894.00		
181	S 73° 45' 36" W	090.33	1,463,846.00	58.00		
182	S 73° 16' 28" W	046.15	1,262,897.00	191.00		
183	S 04° 21' 48" W	101.67	342.00	271,000.00		
184	S 02° 05' 41" W	101.67	1,462,166.00	270,944.00		
185	S 37° 46' 00" W	075.97	1,481,206.00	743.00		
186	S 04° 06' 36" W	064.47	352.00	743.00		
187	S 00° 44' 21" W	04.33	390.00	596.00		
188	S 00° 44' 30" W	04.33	390.00	281.00		
189	S 23° 27' 28" W	04.87	300.00	175.00		
189	ALONG ROCKY BANK OF BAY		358.00	130.00		
190	S 23° 27' 46" W	04.24	300.00	270,044.00		
190	ALONG ROCKY BANK OF BAY		330.00	268,290.00		
191	S 24° 24' 30" W	71.20	340.00	262.00		
192	S 37° 06' 00" W	091.84	1,441,148.00	241.00		
193	S 04° 06' 37" W	04.31	180.00	411.00		
194	S 04° 17' 50" W	04.31	182.00	443.00		
197	S 30° 07' 00" W	194.33	976.00	405.00		
198	S 10° 06' 01" W	115.04	390.00	28.400		
199	S 09° 35' 00" W	04.28	342.00	23.00		
200	S 41° 15' 31" W	04.28	391.00	214.00		
201	S 09° 27' 46" W	06.24	390.00	194.00		
202	S 73° 36' 16" W	05.71	431.00	182.00		
203	S 09° 27' 46" W	72.29	409.00	148.00		
204	S 73° 06' 01" W	03.24	412.00	130.00		
205	S 04° 06' 00" W	04.84	447.00	088.00		
206	S 03° 28' 28" W	23.28	446.00	060.00		
207	S 03° 06' 00" W	21.21	1,451,441.00	260,248.00		

**GRANT BOUNDARY (CONT)**

STA.	COURSES	BEARINGS	DISTANCE	COORDINATES (S)	X	Y
204	S 07° 07' 30" W	40.31	1,441,441.00	260,248.00		
205	S 37° 35' 46" W	02.94	442.00	260,060.00		
210	S 01° 25' 00" W	00.12	442.00	260,248.00		
211	S 01° 25' 00" W	00.12	442.00	260,060.00		
212	S 11° 15' 36" W	00.40	370.00	260.00		
213	S 07° 25' 31" W	02.02	348.00	274.00		
214	S 00° 07' 17" W	120.00	348.00	270.00		
215	ALONG ROCKY BANK OF BAY		348.00	212.00		
216	S 04° 06' 00" W	04.36	342.00	182.00		
217	S 03° 06' 00" W	04.87	342.00	148.00		
218	S 04° 06' 00" W	04.3404	1,441,441.00	260,248.00		

**MONUMENTS**  
 BY CALIF. "MILLAR POINT S, 1957" S.C. 5-10-54  
 1,440,016.00 260,081.00

**PLAT OF THE GRANT TO THE SAN MATEO COUNTY HARBOR DISTRICT**  
 CHAPTER 68, STATUTES OF 1960  
 VICINITY OF HALF MOON BAY  
 SAN MATEO COUNTY, CALIFORNIA  
 SCALE: 1 INCH = 200 FEET

SHEET 4 OF 4 - SEPTEMBER, 1960  
 H. & MATHESON, CIVIL ENGINEERS, 275 DEAN AVE., BERKELEY, CALIF. 947  
 S. A. ROBERTSON, SURVEYOR, 1000 CALIF. ST., SAN FRANCISCO, CALIF.

**STATE OF CALIFORNIA**  
**STATE LANDS COMMISSION STATE LANDS DIVISION**

STA.	COURSES	DISTANCE	GRANT BOUNDARY	ORDINARY HIGH WATER MARK, JANUARY, 1959	COORDINATES (D)
157	N 85° 47' 04" W	302.87	1,428,344.00	370,212.00	
158	N 81° 12' 22" W	1,000.82	1,418,323.00	378,372.00	
159	N 70° 41' 44" W	284.00	1,428,343.00	371,001.00	
160	N 82° 37' 42" W	97.00	707.00	175.00	
161	N 73° 41' 22" W	101.14	414.00	212.00	
162	N 64° 11' 22" W	183.87	218.00	176.00	
163	N 73° 44' 42" W	90.00	284.00	287.00	
164	N 79° 44' 22" W	209.00	24.00	238.00	
165	N 79° 41' 41" W	304.18	1,428,047.00	271,270.00	
166	N 80° 22' 00" W	193.91	1,428,781.00	240.00	
167	N 79° 41' 42" W	122.24	175.00	175.00	
168	N 81° 24' 22" W	128.04	162.00	162.00	
169	N 74° 27' 22" W	87.91	214.00	208.00	
170	N 49° 40' 12" W	84.90	244.00	172.00	
171	N 74° 12' 22" W	92.46	293.00	212.00	
172	N 81° 32' 02" W	94.41	119.00	202.00	
173	N 87° 42' 47" W	418.31	1,428,280.00	245.00	
174	N 80° 27' 22" W	246.27	1,428,211.00	246.00	
175	N 80° 24' 22" W	278.24	242.00	170.00	
176	N 80° 21' 42" W	122.24	1,428,080.00	164.00	
177	N 81° 27' 22" W	227.74	1,428,280.00	168.00	
178	N 79° 42' 22" W	106.12	241.00	151.00	
179	N 82° 12' 22" W	101.71	241.00	118.00	
180	N 78° 47' 22" W	206.26	1,428,280.00	240.00	
181	N 78° 47' 22" W	206.26	1,428,280.00	240.00	

MONUMENTS	PL. C.C. & "PRINCETON", 1959	PL. C.C. & "PRINCETON", 1959	PL. C.C. & "PRINCETON", 1959
PL. C.C. & "PRINCETON", 1959	1,428,044.81	371,812.69	
PL. C.C. & "PRINCETON", 1959	1,428,044.81	371,812.69	
PL. C.C. & "PRINCETON", 1959	1,428,044.81	371,812.69	
PL. C.C. & "PRINCETON", 1959	1,428,044.81	371,812.69	



NOTE  
 Bearings, distances and coordinates shown on this plot conform with the California Coordinate System Zone 10. All base stations were positioned either by the U.S. Coast and Geodetic Survey or by properly adjusted second order triangulation of the State Lands Division.  
 Distances computed from a comparison of the coordinates of two points and distances shown upon the plots are grid distances. The corresponding Spheroidal distance is obtained by multiplying the grid distance by 1.0000415. All stations monumented are designated as such on this plot.  
 The Ordinary High Water Mark is determined at an elevation of 1.63 feet above Sea-level datum of 1929 of the U.S. Coast and Geodetic Survey. Upon this datum C.S. L.C. & "PRINCETON", 1959 is at an elevation of 20.672 ft. (January, 1959)

EAST BREAKWATER - R/W

FILE NO. 38751 T.  
 FILED FOR RECORD AT THE REQUEST OF THE STATE LANDS COMMISSION  
 THIS 13TH DAY OF MARCH 1961 AT 20 MIN. PAST 11 A.M. IN VOLUME 4  
 OF LICENSED LAND SURVEYORS MAPS AT PAGES 108 - 1 9 - 110 AND 111  
 SAN MATEO COUNTY RECORDS  
 RUTH KIRSTE COUNTY RECORDER  
 BY *Edward Sartorius*  
 ASST. COUNTY RECORDER.

PLAT OF THE  
 GRANT TO THE  
 SAN MATEO COUNTY HARBOR DISTRICT  
 CHAPTER 68, STATUTES OF 1960  
 VICINITY OF HALF MOON BAY  
 SAN MATEO COUNTY, CALIFORNIA  
 SCALE: 1 INCH = 200 FEET  
 SHEET 3 OF 4 SEPTEMBER, 1960

E. B. MITCHELL, CIVIL ENGR. TECHNICIAN R. E. REES, ASSISTANT CIVIL ENGR.  
 C. S. PRINCETON ASSOCIATE CIVIL ENGR.

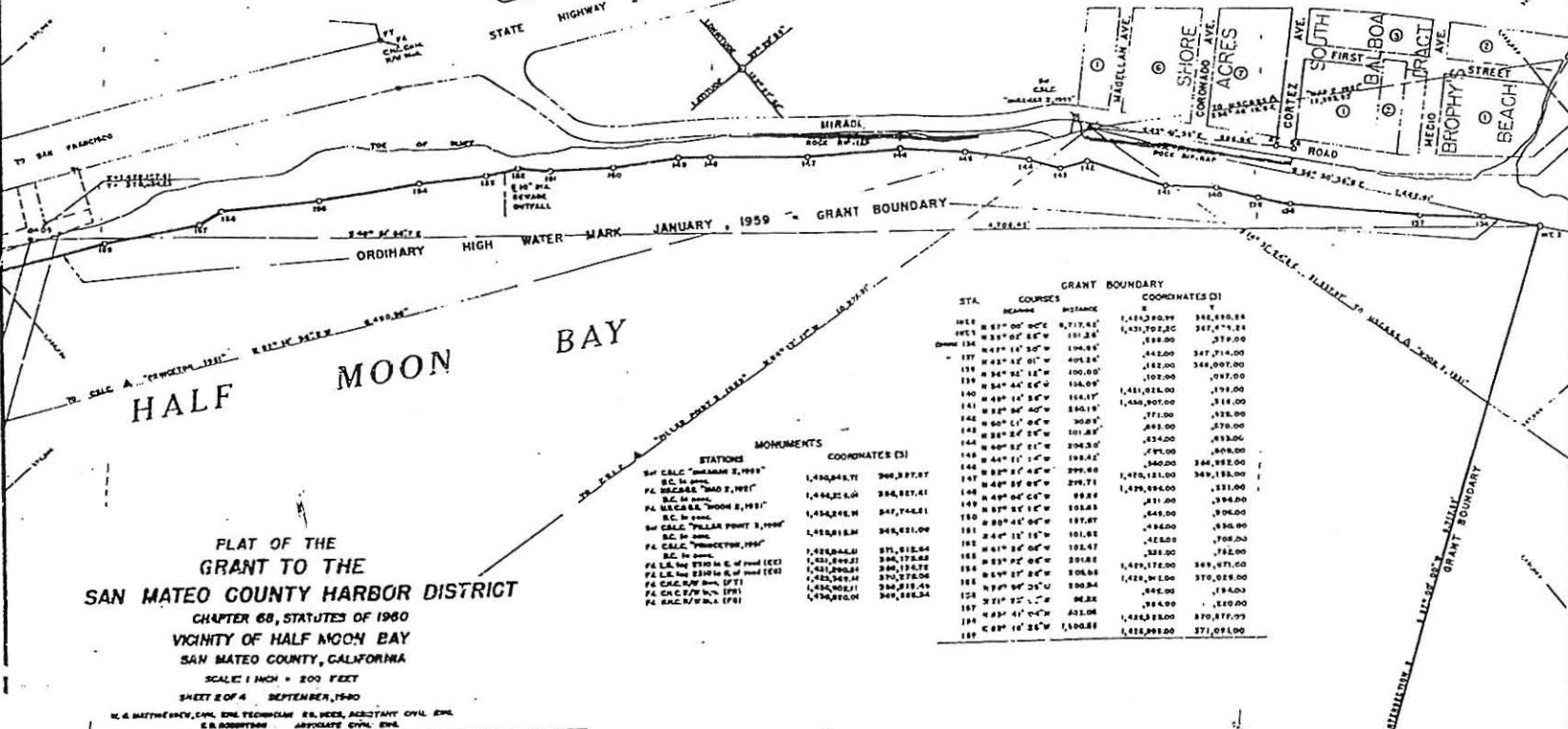
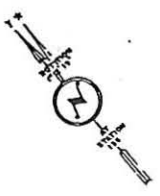
STATE OF CALIFORNIA  
 STATE LANDS COMMISSION STATE LANDS DIVISION

**NOTE**

Bearings, Distances and coordinates shown on this plat conform with the California Coordinate System, Zone 10, all base stations were produced either by the U.S. Coast and Geodetic Survey or by highly adjusted second order triangulation of the State Lands Division.

Distances computed from a comparison of the coordinates of two points and distances shown upon the plat are grid distances. The corresponding geodetic distance is obtained by multiplying the grid distance by 1.0000610. All points monumented are designated as such on this plat.

The Ordinary High Water Mark is delineated on an elevation of 1.65 feet above Sea-level datum of 1929 of the U.S. Coast and Geodetic Survey. Upon this datum C.S. L.C.A. "MIRAMAR 2, 1959" is at an elevation of 4.819 feet (January, 1959).



**PLAT OF THE  
GRANT TO THE  
SAN MATEO COUNTY HARBOR DISTRICT**

CHAPTER 68, STATUTES OF 1960  
VICINITY OF HALF MOON BAY  
SAN MATEO COUNTY, CALIFORNIA

SCALE 1 INCH = 200 FEET  
SHEET 2 OF 4 SEPTEMBER, 1960

W. G. MATTHEWS, CIVIL ENGR. TECHNICIAN, S.B. REG. ASSISTANT CIVIL ENGR.  
E. B. BOBBYMAN, ARCHITECTURE CIVIL ENGR.

STA.	COURSES	GRANT BOUNDARY	COORDINATES (D)
101	N 87° 00' 00" E	8,717.41'	1,432,823.99
102	N 89° 00' 00" E	101.24'	1,431,502.20
103	N 89° 00' 00" E	104.82'	1,431,502.20
104	N 89° 00' 00" E	104.82'	1,431,502.20
105	N 89° 00' 00" E	104.82'	1,431,502.20
106	N 89° 00' 00" E	104.82'	1,431,502.20
107	N 89° 00' 00" E	104.82'	1,431,502.20
108	N 89° 00' 00" E	104.82'	1,431,502.20
109	N 89° 00' 00" E	104.82'	1,431,502.20
110	N 89° 00' 00" E	104.82'	1,431,502.20
111	N 89° 00' 00" E	104.82'	1,431,502.20
112	N 89° 00' 00" E	104.82'	1,431,502.20
113	N 89° 00' 00" E	104.82'	1,431,502.20
114	N 89° 00' 00" E	104.82'	1,431,502.20
115	N 89° 00' 00" E	104.82'	1,431,502.20
116	N 89° 00' 00" E	104.82'	1,431,502.20
117	N 89° 00' 00" E	104.82'	1,431,502.20
118	N 89° 00' 00" E	104.82'	1,431,502.20
119	N 89° 00' 00" E	104.82'	1,431,502.20
120	N 89° 00' 00" E	104.82'	1,431,502.20