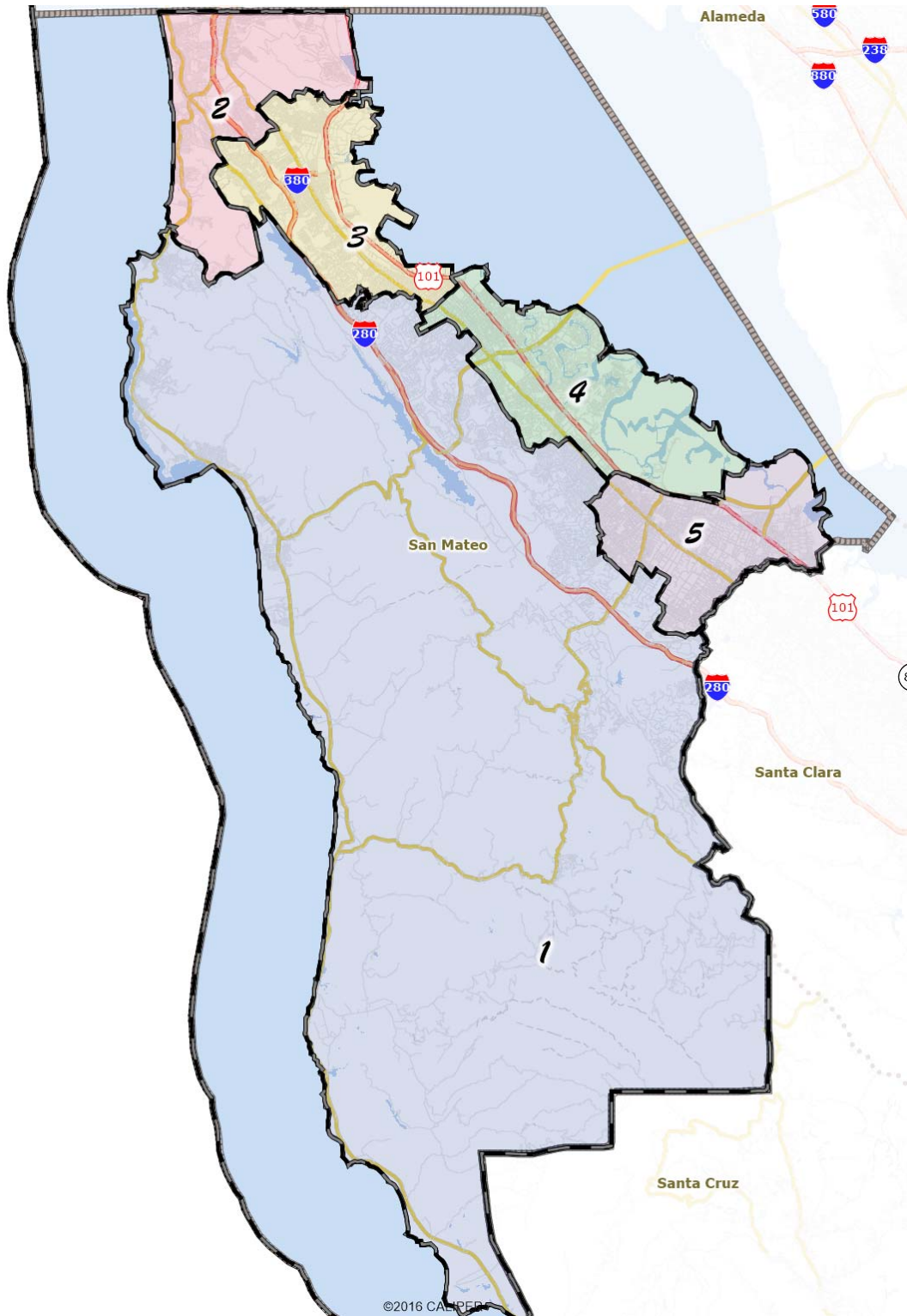


San Mateo County Harbor District San DRAFT PLAN D (Sarsfield/Public Submission)



	Population	Deviation		CVAP		ASIAN CVAP		LATINO CVAP		BLACK CVAP	
1	142,409	(1,281)	-1%	104,453	73%	12,459	12%	9,837	9%	950	1%
2	149,136	5,446	4%	101,313	68%	48,964	48%	18,339	18%	3,703	4%
3	143,548	(142)	0%	97,991	68%	31,151	32%	19,242	20%	2,021	2%
4	141,043	(2,647)	-2%	91,693	65%	20,691	23%	13,428	15%	2,690	3%
5	142,315	(1,375)	-1%	77,850	55%	6,697	9%	19,844	25%	5,513	7%